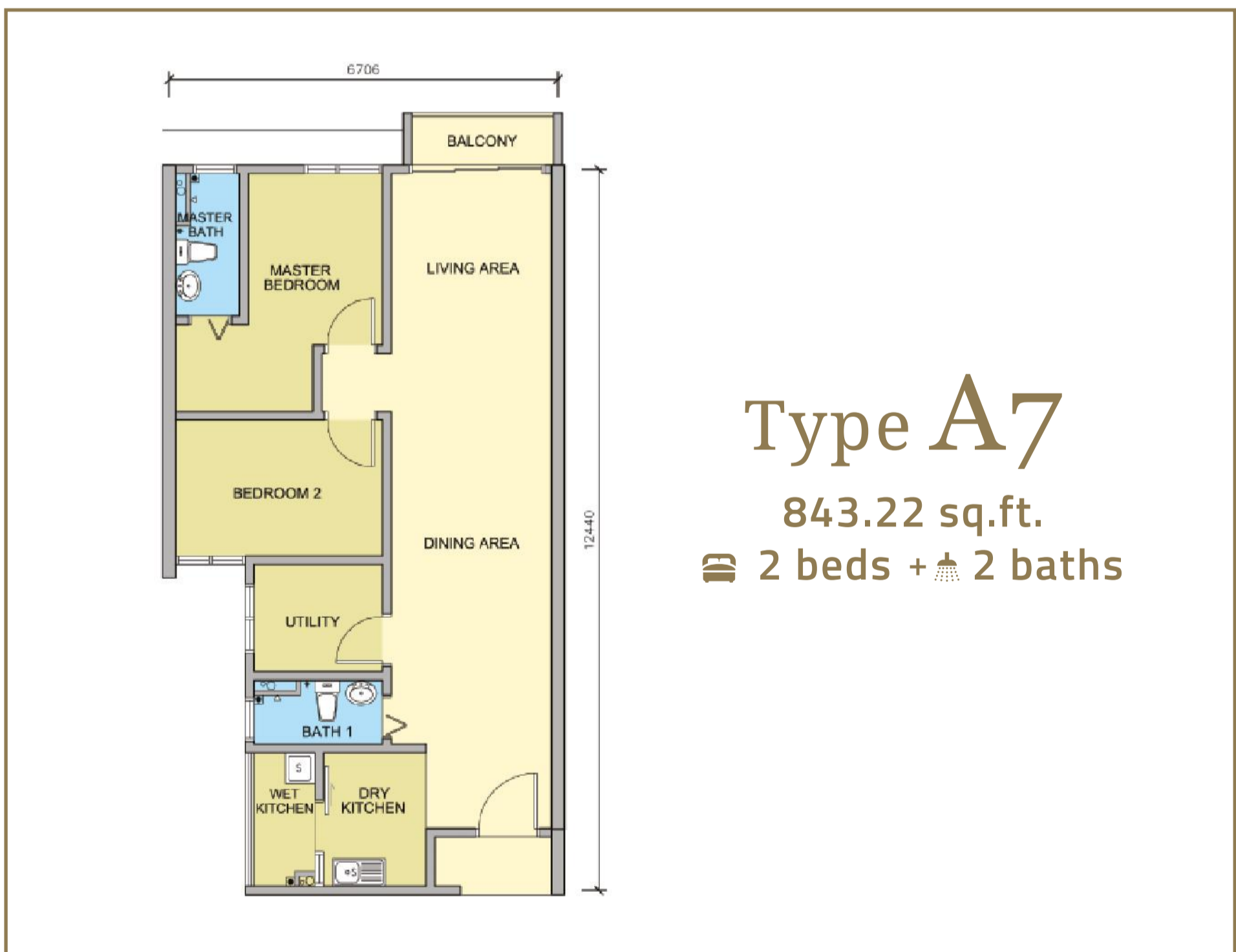




MAPLE RESIDENCES



UNIT TYPE



Developer License No: 3390-55/07-2017/0675(L) (Validity: 30-7-2015 to 29-7-2017) • Advertisement Permit No: 3390-55/07-2017/0675(P) (Validity: 30-7-2015 to 29-7-2017) • Developer: Khoo Soon Lee Realty Sdn Bhd (66584-P) No. 2, Jalan Langat K9, Bandar Restari, 42000 Klang, Selangor, Malaysia. Telephone: 03-3122 8268 • Land Tenure: Freehold • Land Encumbrances: RHB Bank Berhad • Approval Authority: Majlis Perbandaran Klang • Building Plan Approval No: MPK/BGA-600-4/1/191(01/4) • Completion Date: June 2018 • Type of Property: Serviced Apartments • Total No. of Units: 576 units • Block A: 192 units, (Min) RM 512,380.00 • (Max) RM 802,780.00 • Block B: 192 units, (Min) RM 532,180.00 • (Max) RM 845,680.00 • Block C: 192 units, (Min) RM 561,880.00 • (Max) RM 889,680.00. All information contained herein is subject to changes as may be required by the relevant authorities without any notification and shall not be binding or be deemed to form a contract or any part thereof. Whilst every care has been taken in providing this information, we, Khoo Soon Lee Realty Sdn Bhd shall not be held liable for any claim whatsoever arising from the use and/or reliance on the above information. All illustrations and pictures are artist impressions only, no representation or warranty is made as to the accuracy or completeness of the same. The item are subject to variation, modifications and substitutions as may be recommended by the relevant authorities or consultants.

Specifications

Structure	Reinforced Concrete Frame	Floor Finishes	Bedrooms & Utility	Tiles	Sanitary Installation	Kitchen Sink c/w Tap	2 nos	2 nos
Wall	Concrete / Brick (Where Applicable)		Kitchen	Tiles		Bib Tap	3 nos	3 nos
Roofing	Concrete / Metal Deck (Where Applicable)		Balcony	Tiles		Shower Rose	2 nos	2 nos
Ceiling	Generally Skim Coat & Paint / Plaster Ceiling (Where Applicable)		Bathrooms & Store	Tiles	Electrical Installation	13 Amp Socket Outlet	13 nos	17 nos
Windows	Aluminium Frame Window		Internal Bathrooms	Plastered / Skim Coat & Paint		SMATV Point	1 nos	2 nos
Doors	Main Entrance	Timber Fire Rated Door		Wall Tiles Up To 1500mm Height		Ceiling Fan Point	4 nos	5 nos
	Bedrooms	Timber Flush Door		With Plaster & Paint Above		Wall Fan Point	1 nos	-
	Kitchen & Utility	Sliding Door		Wall Tiles Up To 1500mm Height		Lighting Point	18 nos	21 nos
	Bathrooms	Bi-fold door		With Plaster & Paint Above		Telephone Point	1 nos	1 nos
	Store	Timber Flush Door with Louver		Type A		A/C Point	4 nos	5 nos
Ironmongery	Quality Lockset			Type B		Water Heater Point	2 nos	2 nos
Floor Finishes	Living & Dining	Tiles	Sanitary Installation	Wash Basin c/w Tap		Door Bell Point	1 nos	1 nos
				Water Closet				